



Quality of Life
Initiative



Convergence of well-being and quality of life measurement

Valuing what matters



برنامج جودة الحياة
QUALITY OF LIFE PROGRAM



Quality of Life
Initiative



Presentation Outline

1. Background and process – QoL Initiative
2. Added Value
3. Index Creation
4. Initial Insights
5. Working with EGWM



Quality of Life
Initiative



Background and Process



Quality of Life
Initiative



About the Initiative

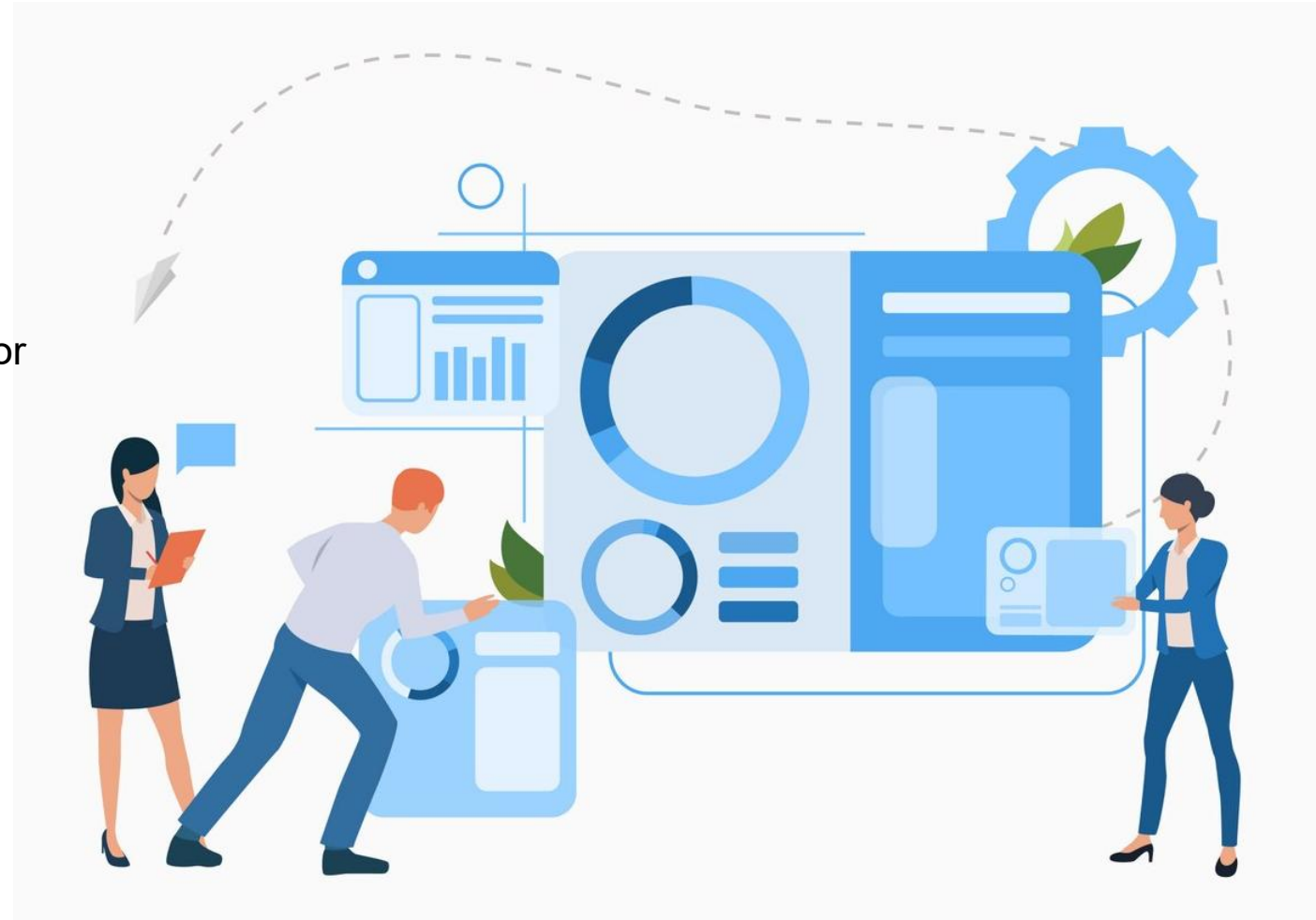
Key Ambition

- Understand evolving nature of QoL and impact for policy.
 - Change in conceptualization > pandemic, inequalities, climate change, technological revolution...

Sponsor

Quality of Life Program Center, Kingdom of Saudi Arabia

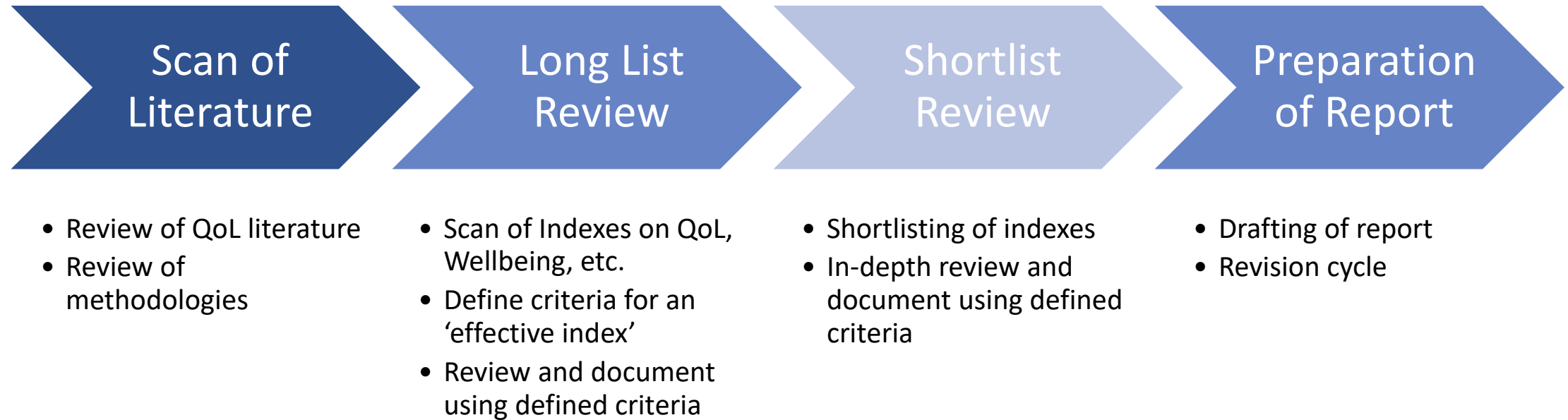
Duration Initial Phase: 2023 to 2025





Work initiative by - Index Evaluation Report - Process

General Approach





Conclusion of Analysis of existing indexes

Few Indices measure quality of life at the local level, particularly proximity indicators

UMF dimensions are not comprehensively covered, few indices go beyond economic, social and environmental

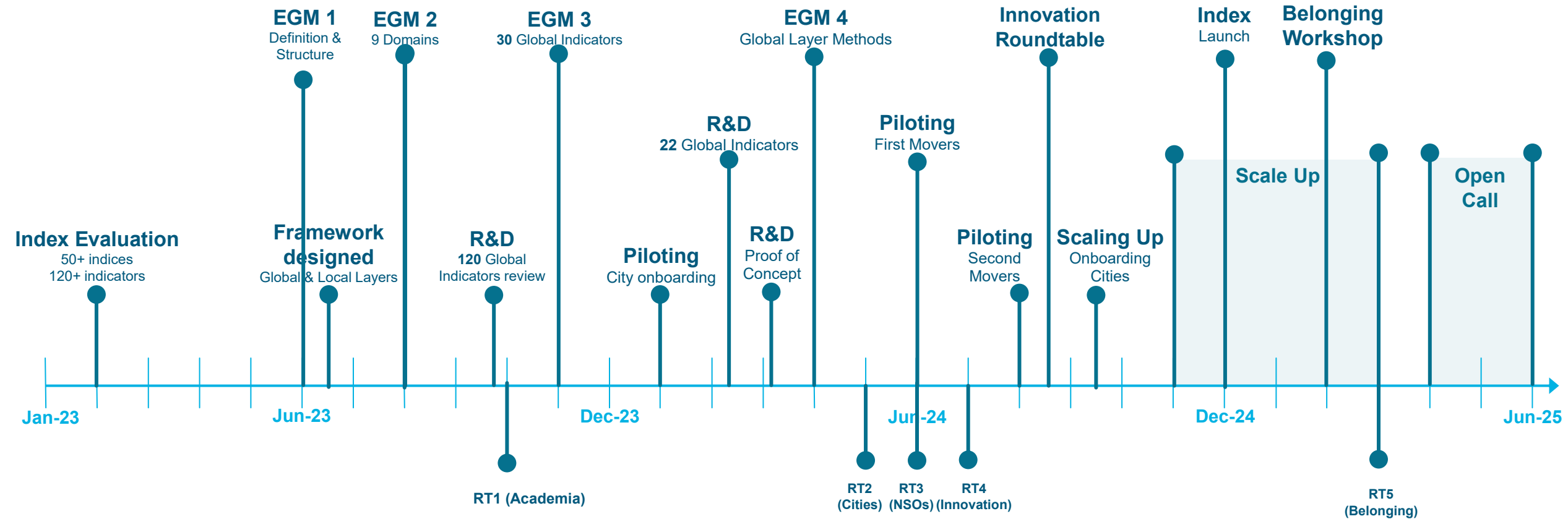
Some of the more recognized city-level indices are not open source

Many are focused on measuring the inputs and not the outcomes (i.e, number of hospitals versus quality of accessible healthcare)

By design, few indices address inclusivity by disaggregating data (i.e, gender, age, disabled)

A Long Journey in the co-creation process of the Index

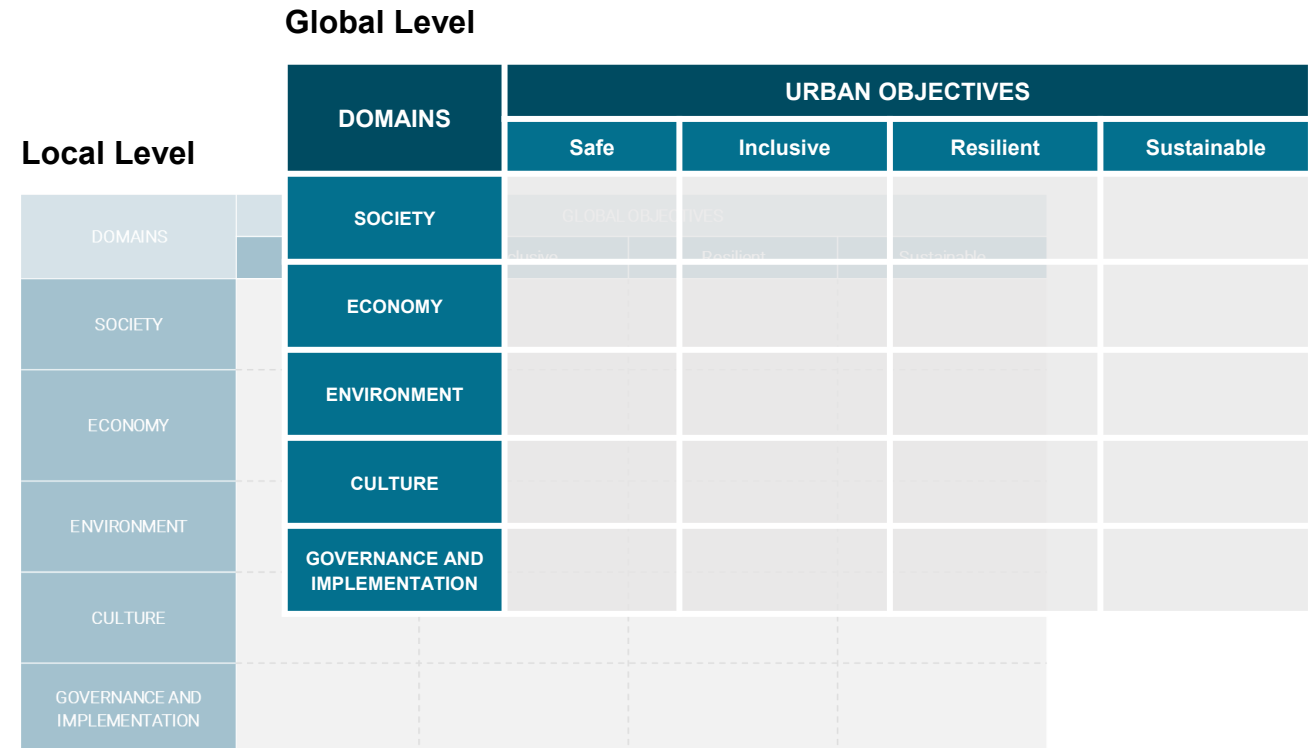
Extensive consultation, 500+ actors



QoL based on the Global Urban Monitoring Framework

Portfolio of Indicators:

- Index design inspired by global and local layer indicators.
- Domains that were adapted according to current needs.
- Urban objectives that inspired the use of QoL lenses.





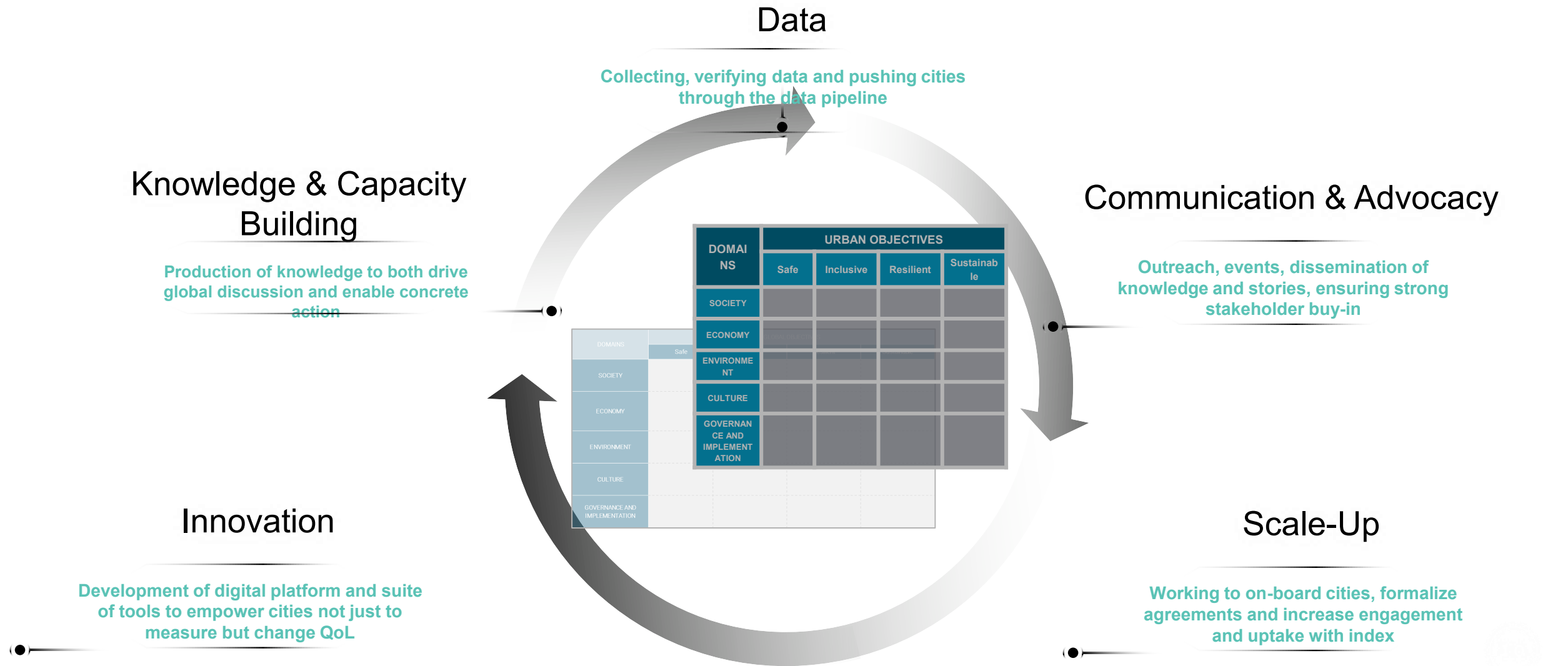
Quality of Life
Initiative



Added Value

An Index surrounded by support workstreams

The QoL Initiative has the development of a decision-support tool (index) at it's core. This tool is supported by a number of integrated workstreams, providing an ecosystem of knowledge and support for engaged stakeholders





Quality of Life
Initiative



Value proposition

1- Reflecting Subjective Experience in Cities

- ▶ People-centered approach to development to support prioritization of actions

2- Creating a Globally Relevant, Locally Applicable Index

- ▶ Ensuring universal coverage while integrating local nuances
- ▶ Allowing cities to highlight what matters the most to them
Contributing to the localization of the SDGs

3- Disaggregating Data to Foster Inclusive Policies

- ▶ Current frameworks often do not allow for data disaggregation
- ▶ Key aspect to leave no one behind allowing targeted actions

4- Harnessing new and innovative data

- ▶ Innovative pathways for data collection: AI, mobile phone pings, social media surveys, machine learning, etc.
- ▶ Innovative pathways for policy action, AI, machine learning, etc.



Connection with global agendas

The Initiative helps translate global agendas to local actions by:

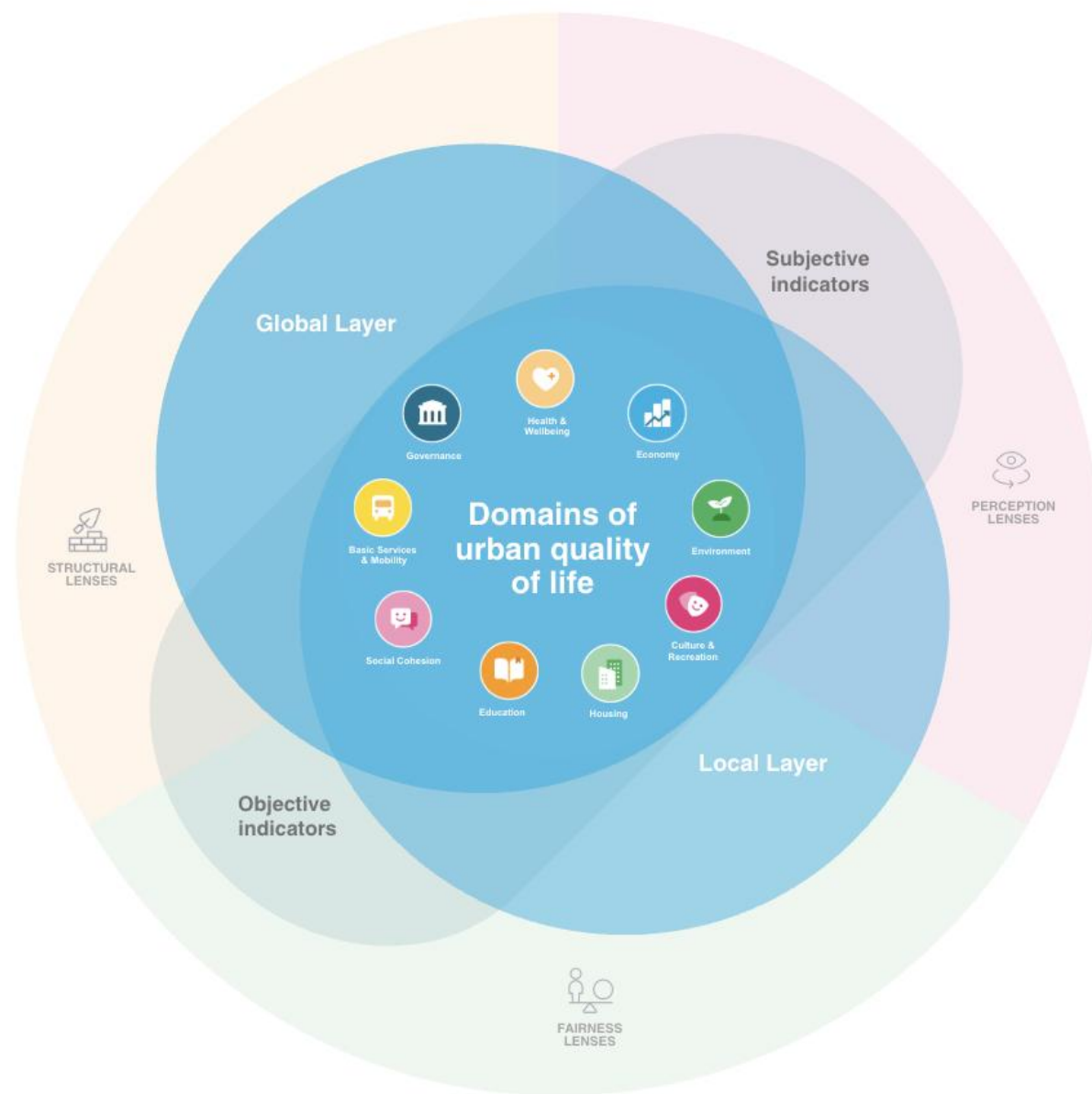
- Refining statistics by going beyond national averages to local realities.
- Developing indicators that reflect local needs and priorities
- Providing granular insights to guide targeted urban interventions
- Bridging global frameworks with lived experiences in cities



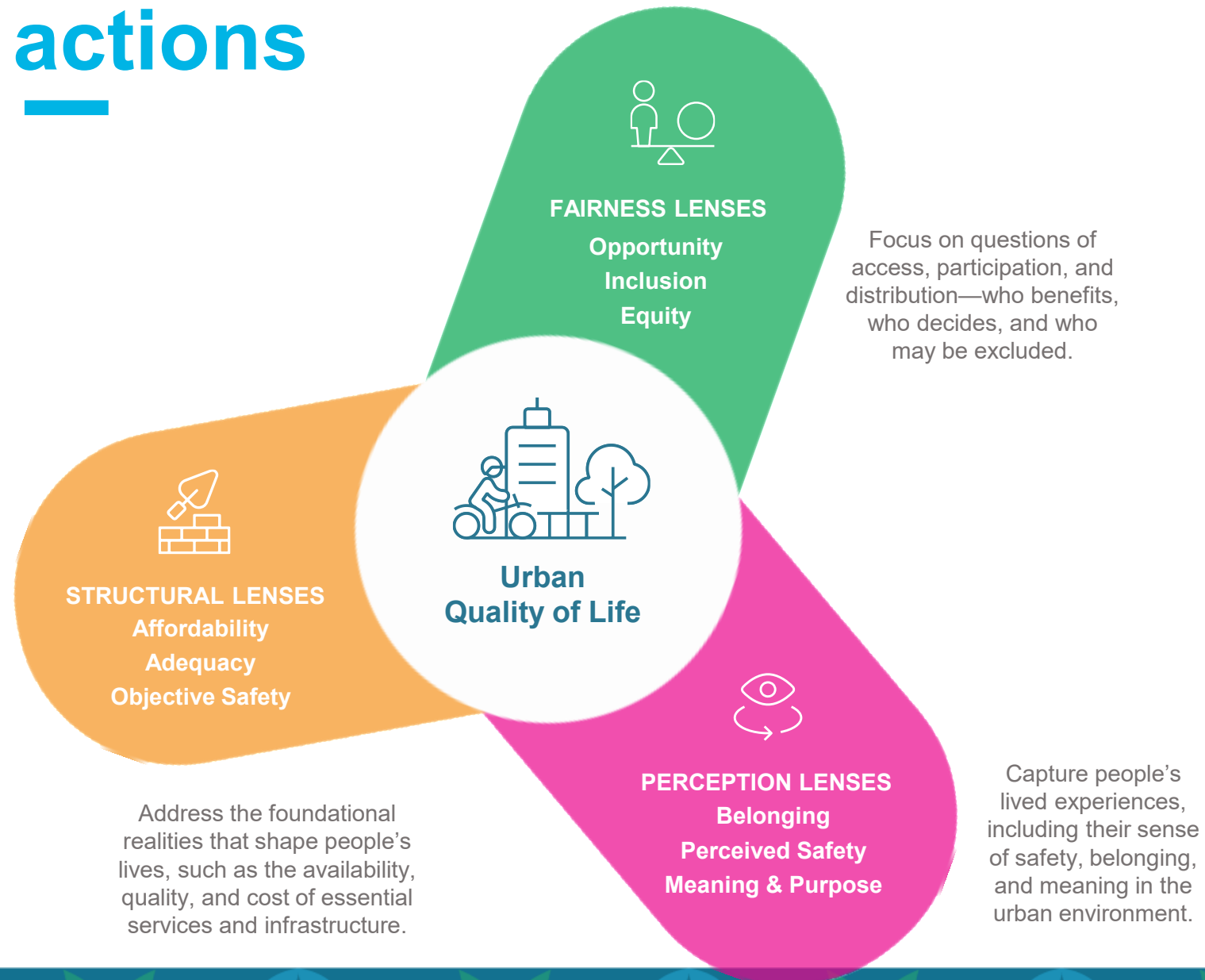


Quality of Life
Initiative

QoL Index – Multiple integrations



QoL Lenses to inform policy actions



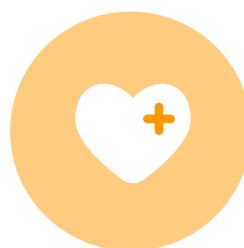
Domains



**Basic Services
& Mobility**



Governance



**Health &
Wellbeing**



Economy



Environment



Social Cohesion



Education



Housing



Culture & Recreation



Quality of Life
Initiative



Index Creation

Global layer indicators

Domain	Indicator	Indicator Description	SDG	UMF Domain	Type of data
Basic Services & Mobility	Out at Night	Proportion of people seen in their neighborhood after dark	16	Safe Society	Mobile-ping data
	Perceived Safety at Night	Proportion of the population that feels safe walking along around the area they live after dark	16.1.4	Safe Society	Social media survey
	Public Transport Convenience	Proportion of population that has convenient access to public transport	11.2.1	Sustainable Economy	Geospatial analysis
	Mobile Connectivity	Mobile internet penetration, speed and latency	9	Inclusive Society	Mobile-ping data
	Public Transport Satisfaction	Proportion of the population satisfied with the quality of public transport in the city	11	Sustainable Economy	Social media survey
Culture & Recreation	Cultural Activity	Median number of visits to cultural sites, sporting or recreation facilities	11	Inclusive Culture	Mobile-ping data
	Leisure Time	Median dwell time of people in identified leisure and recreation sites per month	11	Safe Culture	Mobile-ping data
	Sport & Recreation Facilities Satisfaction	Percentage of population satisfied with public sport and cultural facilities provided by the city	11	Inclusive Culture	Social media survey
Economy	Perceived Ease of Finding a Job	Proportion of the working population reporting strongly agree or agree with the statement 'it is easy to find a good job in my city	8	Inclusive Economy	Social media survey
	Unemployment	Average annual unemployment rate (by age and gender)	8.5.2	Resilient Economy	Administrative data
	Poverty	Percentage of population living below the national poverty line	1.1.1	Safe Economy	Administrative data
Education	Education Completion	Completion rate (elementary education and secondary education)	4.1.2	Resilient Society	Administrative Data
	Education Quality Satisfaction	Percentage of population satisfied with the quality of public schools and educational facilities in the city	4	Resilient Society	Social media survey
Environment	Clean Air	Number of days that exceed the WHO standards on particulate matter (average of PM2.5/PM10)	11.6.2	Safe Environment	Google AQI
	Tree Coverage	Change in tree canopy coverage relative to 2020 base year	15	Sustainable Environment	Machine learning model
	Confidence in Climate Resilience	Proportion of population that feels 'somewhat not concerned' or 'not concerned at all' about their cities' future in light of climate change	13	Resilient Environment	Social media survey
	Public Space Proximity	Percentage of households living within 15 minutes of public open space (by foot)	11	Inclusive Environment	Geospatial analysis
	Green Space Satisfaction	Percentage of population satisfied with the green spaces provided by the city	11	Inclusive Environment	Social media survey

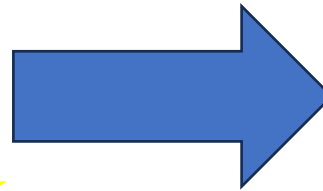
Domain	Indicator	Indicator Description	SDG	UMF Domain	Type of data
Governance	Trusts Local Government	Proportion of population that are happy with the local public administration	16.6.2	Inclusive Governance	Social media survey
	Confidence in Local Law	Percentage of population that reports having confidence in local law enforcement institutions (i.e., police and courts)	10	Sustainable Governance	Social media survey
	Crime and Safety	Intentional homicide rate	16.1.1	Safe Governance	Administrative data
Health & Wellbeing	Mental Wellness	Average overall mental health rating	3	Resilient Society	Social media survey
	Healthy Life Expectancy	Healthy life expectancy at birth (HALE)	3	Sustainable Society	Administrative data
	Healthcare Satisfaction	Percentage of population satisfied with public healthcare facilities provided by the city	3	Inclusive Society	Social media survey
Housing	Housing Affordability	Shelter cost to income ratio	11	Inclusive Society	Administrative data
	Perceived Housing Affordability	Proportion of population reporting it is easy to find good housing in my city at a reasonable price	11	Safe Society	Social media survey
Social Cohesion	City Connection	Proportion of population that reports very or somewhat strong sense of attachment to their city	16	Inclusive Society	Social media survey
	Support Circle	Proportion of the population that reports having people to turn for help (family, friends and neighbours)	16	Resilient Culture	Social media survey
Benchmark	Life Satisfaction	Taking everything in your life into consideration, on a scale of 1 to 10 (with 1 being very unsatisfied) how satisfied are you with your life these days?	3	Sustainable Culture	Social media survey

Local Layer indicators: Co-creation with 10 Pilot Cities



★ **First Movers:** Vancouver,
Queretaro, Madinah, Nis, Logan

★ **Second Movers:** Quito, Kampala,
Bubaneswar, Udon Thani, Punuaaia,



1. Problem/ Priority Definition



2. Benefits Identification



3. Indicator Selection



4. Data Discovery

Local Layer indicators: Selected examples

Domain	Pilot City	Local layer indicator identified
Basic services & mobility	Vancouver	Percentage of intersection corners that have all required curb ramps to enable accessibility
	Logan	Number of reported crimes at train stations per capita per annum
	Queretaro	Total length of cycleways as a percentage of total roads
	Udon Thani	Number of complaints about waste management at public parks
	Bhubaneswar	Proportion of streets equipped with CCTV for safety by BMC
	Bhubaneswar	Number of public toilets per 10,000 people
Culture & recreation	Vancouver	Percentage of adults meeting Canadian physical activity guidelines
	Madinah	Number of developed historical sites
	Queretaro	Number of empty or abandoned houses in historic districts
	Udon Thani	Level of interest in local culture/tradition among young generation
Economy	Vancouver	Storefront vacancy rate
	Madinah	Survival rate of new businesses
	Queretaro	Gini coefficient (income inequality)
	Udon Thani	Proportion of working population that feels 'somewhat not concerned' or 'not concerned at all' about household debt
Education	Vancouver	Percentage of schoolchildren learning about Indigenous peoples in Canada
	Vancouver	Percentage of Vancouver residents who are active library cardholders
	Madinah	Student to teacher ratio
Environment	Logan	Proportion of dwellings not inundated as a share of all dwellings in LGA per annum
	Nis	Number of illegal dumpsites within the city
	Udon Thani	Number of complain about air pollution (PM)
	Kampala	Percentage of wetlands encroached

Local Layer indicators: Selected examples

Governance	Vancouver	Percentage of people who agree that they can have an impact on local issues in Vancouver
	Queretaro	Presence of civil society participation in urban planning
	Udon Thani	Proportion of people feeling that they are equally treated by the local public administration
	Bhubaneswar	What is the average response time for addressing grievances submitted through the online platform
Health & Wellbeing	Vancouver	Rate of toxic drug deaths
	Queretaro	Suicide rate per 100,000 population
	Bhubaneswar	Mortality rate due to dengue and malaria
	Nis	Immunization coverage (DTP-3)
Housing	Vancouver	Rental housing vacancy rate
	Nis	Proportion of population living in households with access to safe drinking water from the piped water supply system in their own home
	Nis	Share of apartments in public ownership leased under non-profit conditions in the total number of apartments in public ownership
	Kampala	Percentage of population living in informal settlement
	Kampala	Percentage of population with a secure house tenure
Social cohesion	Vancouver	Percentage of people experiencing loneliness (based on the UCLA three-item scale)
	Vancouver	Percentage of people who agree that there are both events/festivals/spaces and services/supports that reflect the communities they belong to
	Madinah	Number of volunteering opportunities per 100,000 population
	Nis	Proportion of the population who agree with the statement 'persons with disabilities have access to the same educational and employment opportunities as others within the community'



Quality of Life
Initiative



Initial results and insights



Quality of Life
Initiative

A global city movement



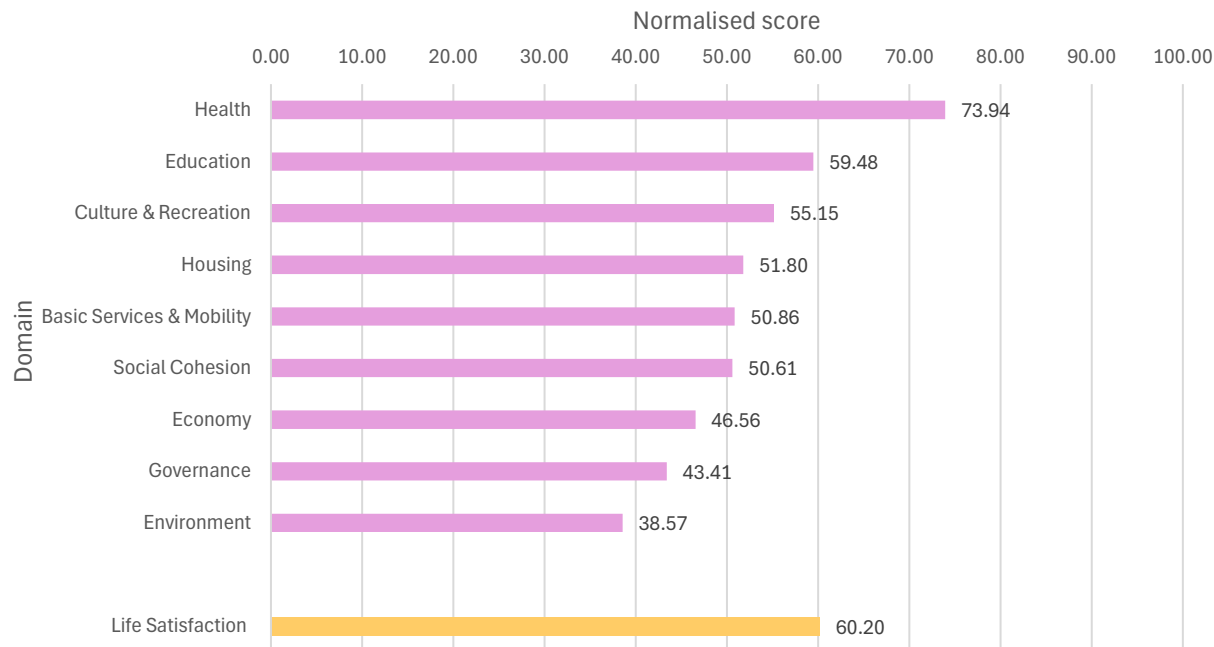


Quality of Life
Initiative

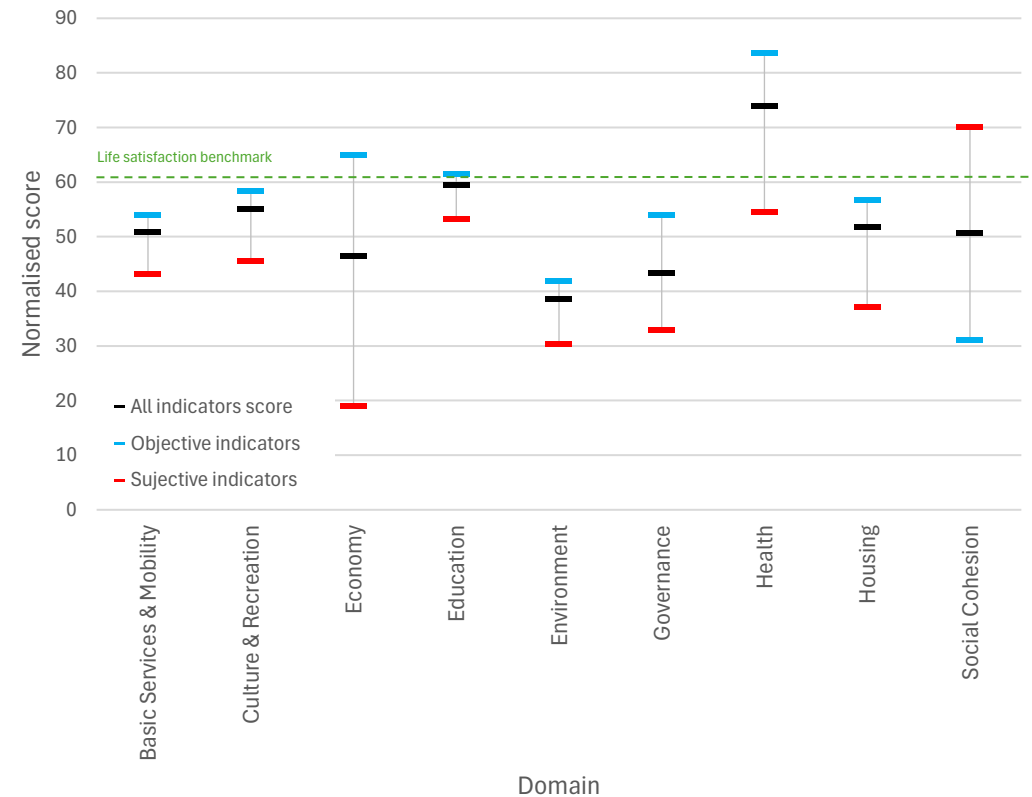


Focus on Kampala, Uganda

Kampala: Quality of life indicator averages, combining global and local layers, by domain, ranked



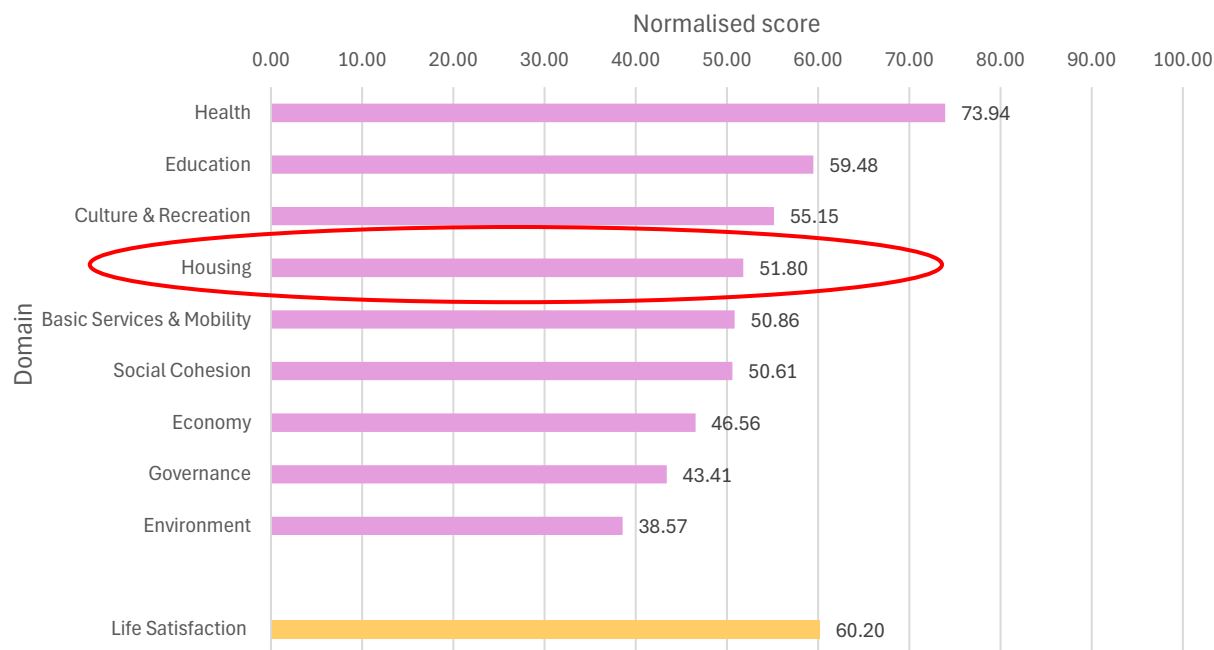
Kampala: Quality of life indicator averages by domain. Averages of **objective** and **subjective** indicators per domain also shown.



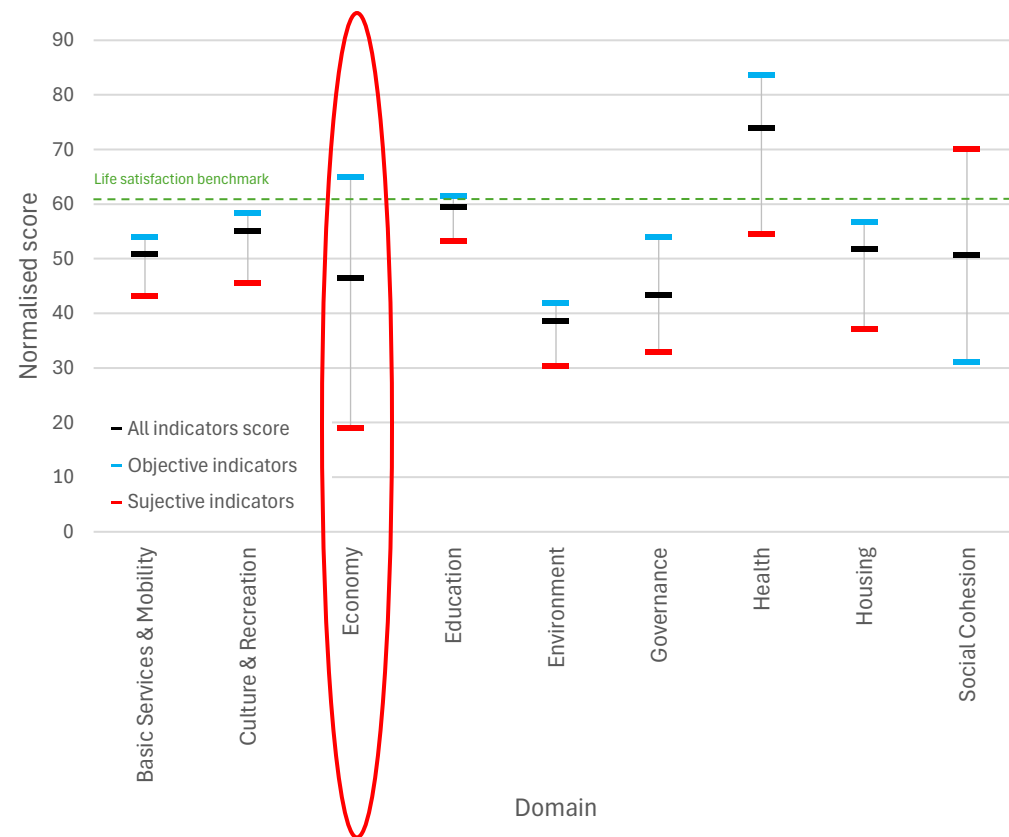


Focus on Kampala – ‘Economy’ domain

Kampala: Quality of life indicator averages, combining global and local layers, by domain, ranked



Kampala: Quality of life indicator averages by domain. Averages of **objective** and **subjective** indicators per domain also shown.



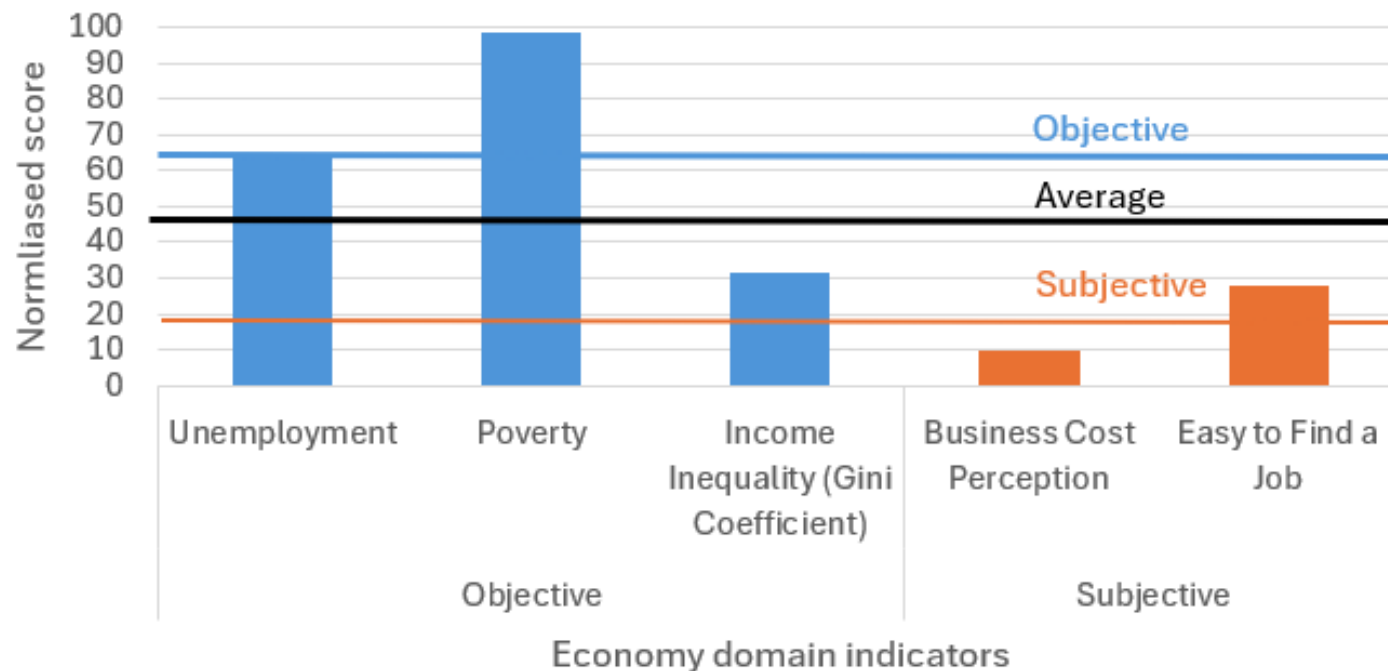


Quality of Life
Initiative



Focus on Kampala – ‘Economy’ domain – objective versus subjective indicators

Kampala: Economy domain divided into objective and
subjective component indicators



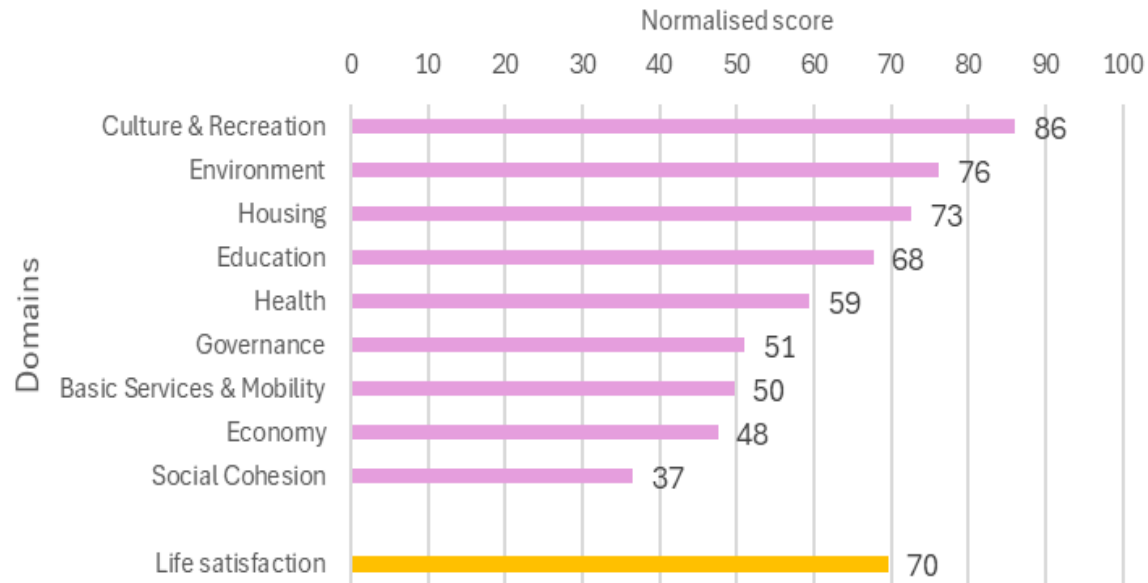


Quality of Life
Initiative

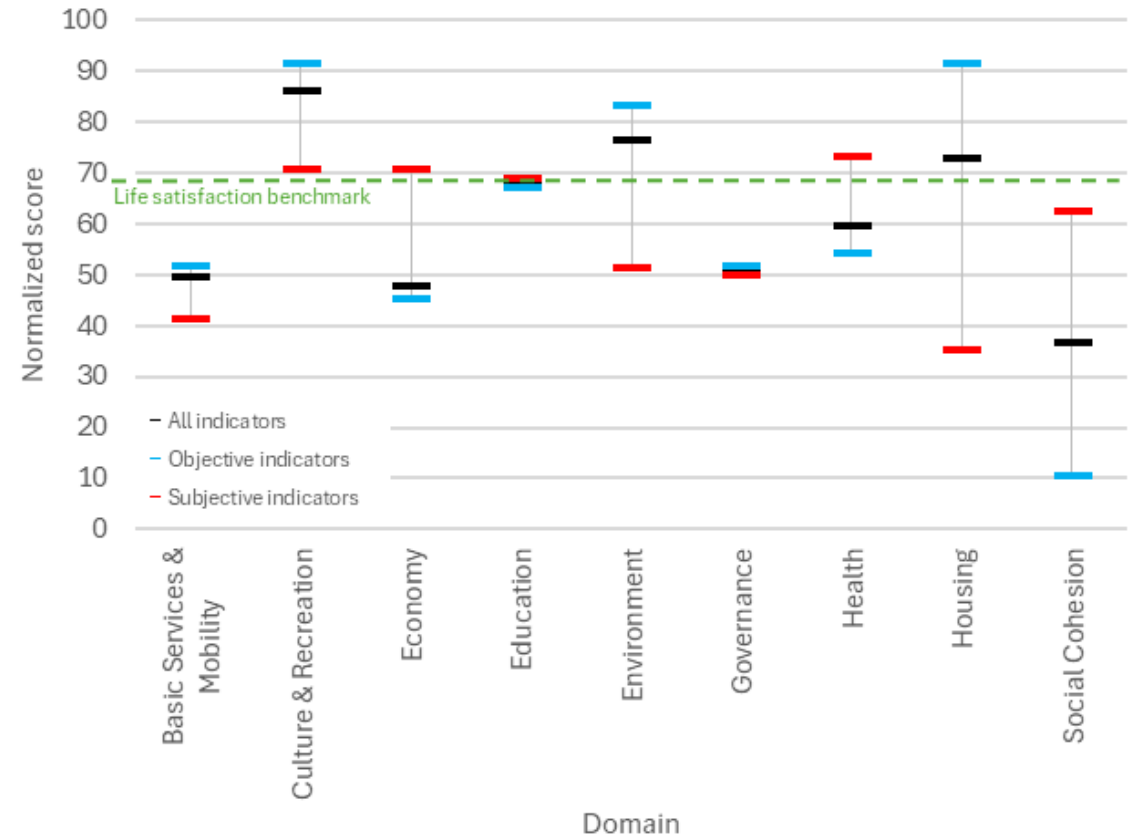


Focus on Logan, Australia

Logan: Quality of life indicator averages, combining global and local layers, by domain, ranked



Logan: Quality of life indicator averages by domain. Averages of **objective** and **subjective** indicators per domain also shown.



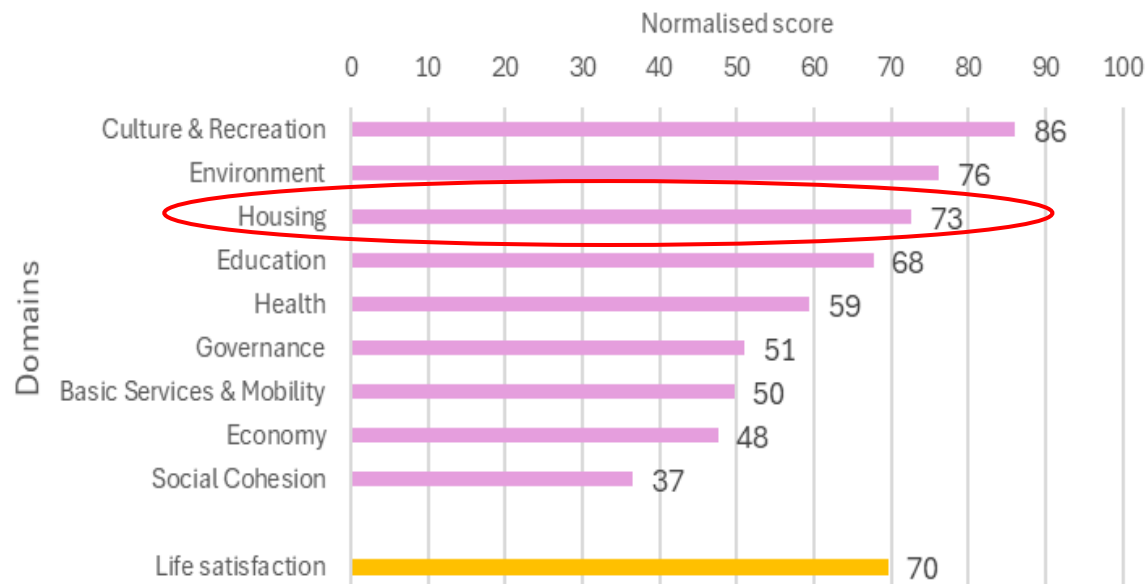


Quality of Life
Initiative

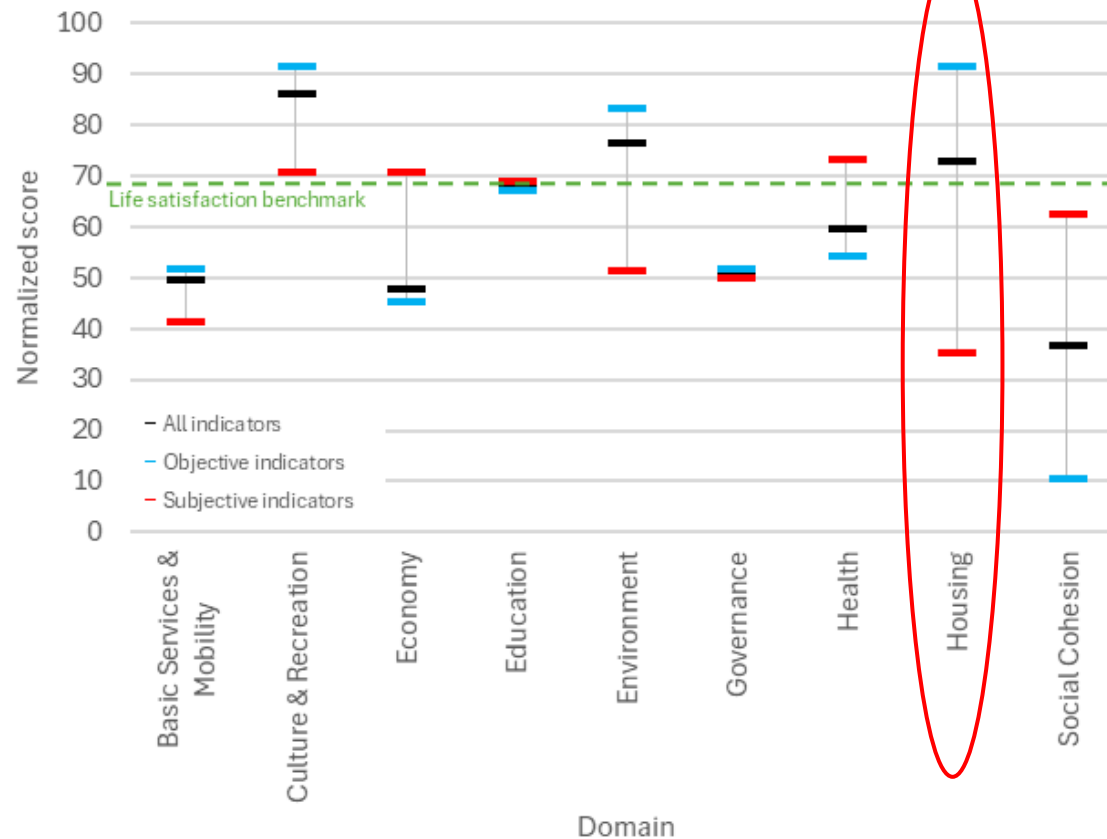


Focus on Logan – Housing domain

Logan: Quality of life indicator averages, combining global and local layers, by domain, ranked

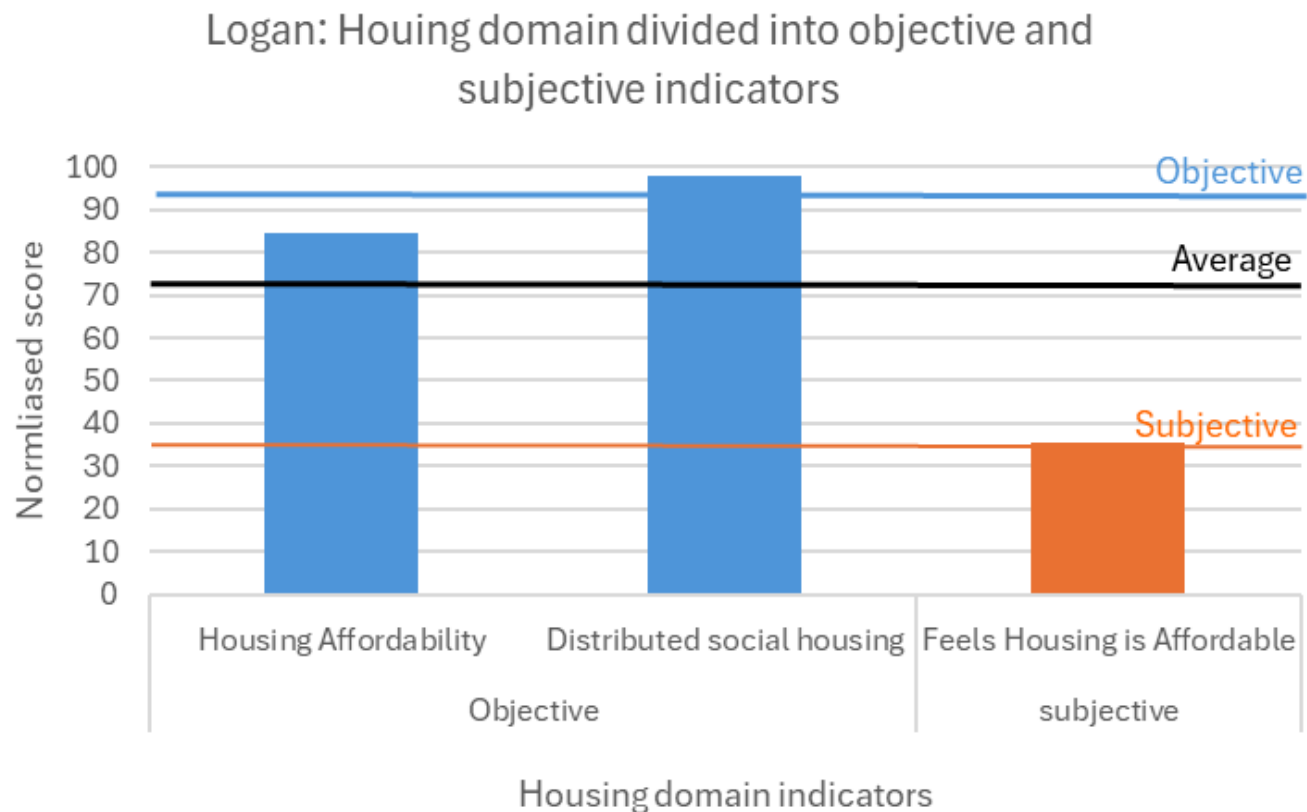


Logan: Quality of life indicator averages by domain. Averages of objective and subjective indicators per domain also shown.





Focus on Logan – Housing domain: objective versus subjective indicators





Quality of Life
Initiative



The Quality of Life Initiative Guidelines

Target Audience



**City Leaders/
Representatives**



**Implementation
Leaders**



**Supporting
Stakeholders**

An effective tool and policy-driven process to improve urban living conditions

Objectives of the Guidelines

Enable cities to create a comprehensive Index:

- Step-by-step guidance to create a Local Layer and integrate it with the Global Layer.
- Instructions for establishing indicator values and uploading data to the QoL Platform.

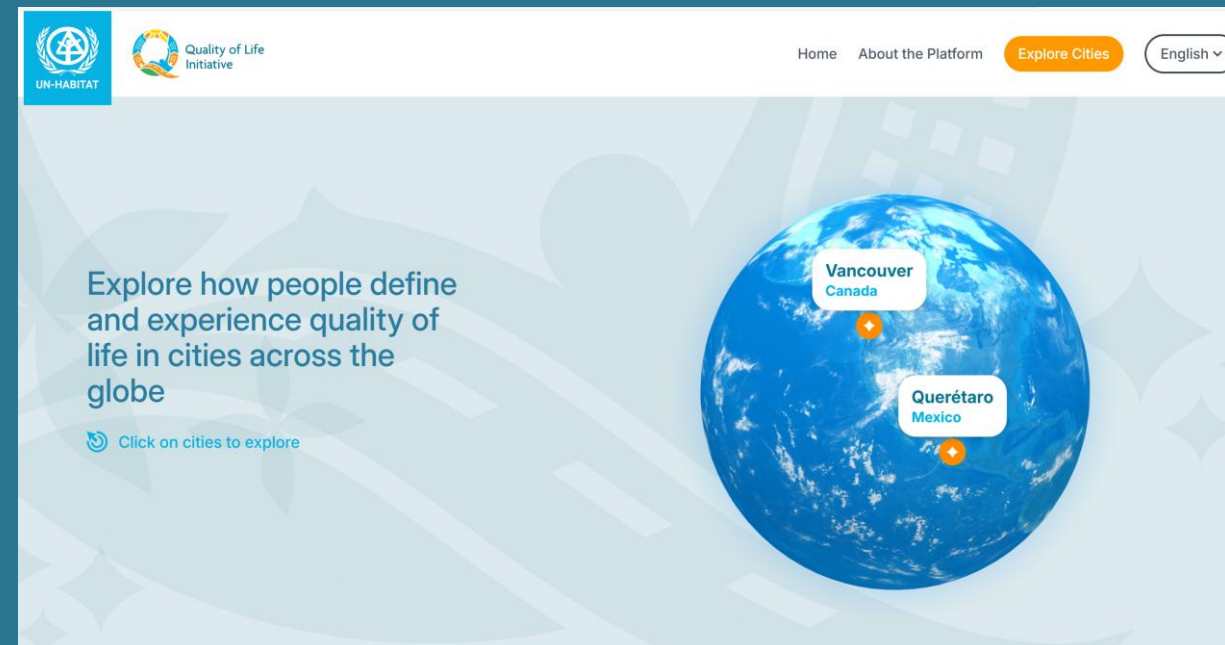
Enable cities to continuously improve:

- Guidance for updating data, monitoring performance, and using the Index for policy and investment decisions.

Quality of Life Platform

- A place for a city profile
- A tool for city data visualization and analysis
- An AI-enhanced repository of knowledge and good practices on quality of life measurement and improvement.

golimpact.com



Impact Map

Navigate to the City's Impact Map - a simple tool that lets you explore and interact with the vital aspects of life in the city.

[Explore Impact Map](#)

Quality of Life in detail

Click to explore each of the 9 key domains of the Quality of Life index within a city!

Tip 🌟 labels best performing domain

[Basic Services & Mobility](#)

[Governance](#)

[Health & Wellbeing](#)

How's life in Vancouver?

Vancouver is the core city of the third largest metropolitan region in Canada. The city has an estimated population of 732,581 while the region holds nearly 3 million (BC Stats, 2023). Vancouver is situated on the unceded homelands of the Musqueam, Squamish and Tsleil-Waututh Nations, and prioritizes reconciliation and Indigenous rights in its work. Vancouver is a dense city located in a temperate rainforest, with connections to the ocean, to rivers, to forests and to the surrounding mountains. The population of Vancouver is diverse, and the city aspires to enable people from all cultures, backgrounds and experiences to express themselves and...

[Read more](#)

Life Satisfaction in Vancouver

Vancouver has a strong life satisfaction score of 70, indicating that most residents are relatively happy with their lives.



Basic Services & Mobility

Global Indicators

Explore universal indicators that reflect quality-of-life dimensions in cities

Overall Score: 77 Basic Services & Mobility

For Basic Services & Mobility, an overall score of 77 for Vancouver shows that the city excels in many areas, with most indicators performing well, though there is still potential for fine-tuning and addressing smaller gaps.

[SDG8](#) [SDG11](#) [SDG10](#)

What are SDGs?

[Governance](#)

[Health & Wellbeing](#)

[Economy](#)

[Environment](#)

[Safe Society](#) [SDG16](#)



Out at Night Score
score of 74.0

[Sustainable Economy](#) [SDG11](#)



Satisfied with Public Transport Score
score of 68.0

[Safe Society](#) [SDG16](#)



Feels Safe at Night Score
score of 68.0

[Sustainable Economy](#) [SDG11](#)



Public Transport Convenience Score
score of 98.0

[Inclusive Society](#) [SDG9](#)



Mobile Connectivity Score
score of 77.4

Discover and share the hidden gems of Vancouver's green spaces!

[Back](#)

Vancouver



Mobility



Governance



Health



Economy



Environment



Culture



Education



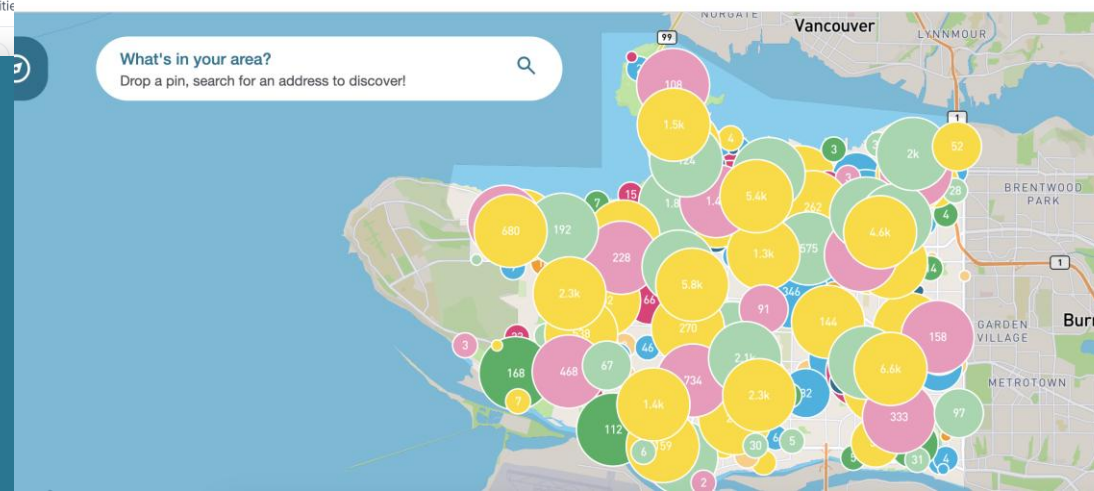
Housing



Social

What's in your area?

Drop a pin, search for an address to discover!





Quality of Life
Initiative



Merging QoL and well-being measurements



How can QoL engage with the EGWM as a city-level partner connecting national statistics to local realities in advancing the Beyond GDP agenda?

1- Unified, people-centered metrics

- ▶ **Alignment** on shared measurement language linking FISW and QoL frameworks

2- Local-level delivery vehicle

- ▶ **Use** QoL tools to pilot FISW concepts at city and territorial levels

3- Interoperability and comparability

- ▶ **Align** taxonomies and indicators to enable cross-city and cross-country benchmarking.

4- Policy coherence

- ▶ **Bridge** global agendas with local action through a shared beyond-GDP approach.

5- Lower coordination costs

- ▶ **Benefit** from existing structures and processes



Quality of Life
Initiative



Findings from 9 pilot cities

		Vancouver	Madina	Nis	Queretaro	Logan	Quito	Udon Thani	Bhubaneswar	Kampala
Domains	Basic Services & Mobility	73.2	70.7	68.0	59.5	49.7	59.8	69.2	51.7	50.9
	Culture & Recreation	72.4	45.4	53.9	65.0	86.1	78.9	91.6	62.7	55.2
	Economy	68.9	63.8	63.2	74.9	47.6	68.0	78.8	68.3	46.6
	Education	64.2	75.7	69.5	66.4	67.7	72.8	81.8	69.8	59.5
	Environment	73.4	68.4	56.2	42.7	76.2	49.9	56.4	48.1	38.6
	Governance	52.9	84.3	56.2	65.5	51.1	55.1	79.4	86.4	43.4
	Health	53.5	69.9	62.1	52.9	59.4	64.5	68.8	60.2	73.9
	Housing	36.0	69.2	67.2	35.2	72.6	68.8	82.6	77.7	51.8
	Social Cohesion	57.2	74.5	44.3	62.6	36.6	47.2	90.0	75.3	50.6
Life satisfaction benchmark		73.4	68.4	56.2	42.7	76.2	49.9	56.4	48.1	38.6